



HYDROMAX HM-1600NSM-24

Hydraulically driven

AC GENERATOR

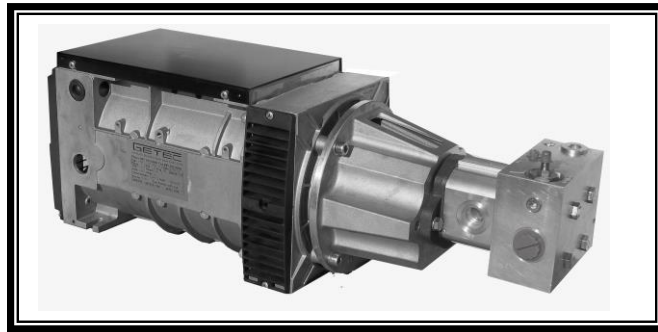
Generator

Voltage

120 V or
120/240 V

AC POWER

16 000 WATT
Cont.
17 000 Watt
interm.



FREQUENCY

60 HZ

Hydraulic Requirements

24 GPM @ 2100 PSI

Mechanical

Speed 3600 RPM
Size 9.5 in H, 9.5 in W, 29 in L
Weight 112 LBS

Electrical

Sinewave less than 4 % Distortion
Motor Starting 400 %
Voltage Regulation 3 % @ 3600 RPM
Capacitor Voltage Regulation
Continuous Overload up to 17 KW
Temperature Rating 105 C
Insulation Class H



624 Harris Road
Ferndale New York 12734

(845)-292-0800
<http://www.getec.com>